

Alaska Department of Fish and Game

Habitat Section
Southeast Region



182-80-101000-2005-3004 Tributary 1

ADDITION

Water body name:

Quad: Yakutat C-5

Upper Reach Latitude: 59.493537 **Longitude:** -139.687296

Lower Reach Latitude: 59.490760 **Longitude:** -139.647970

Survey date: 9/18/2024

Species & Lifestage: CO, CT

Survey crew: CD, FC

Findings: We surveyed this uncataloged stream from the road using baited minnow traps and GPS and captured juvenile coho salmon (Figure 1). The stream is slow moving through a ditched channel alongside the road connecting Steam No. 182-10100-3004 and Stream No. 182-80-10100-2005-3010-4002 (Table 1; Figures 2, 3).

Recommendations: Add this uncataloged tributary to the anadromous waters catalog for rearing coho salmon (Figure 4).

Nomination: Pending

Table 1.—182-80-10100-2005-3004 tributary 1 survey data.

Waypoint	Latitude	Longitude	Notes	Stream Width ft	Stream Substrate	Habitat Features	Gradient %	Sample Effort	Sample Results
1272	59.493796	-139.670839	Channel parallels road up to this point in a ditch. Appeared to be well connected while driving past. Multiple tributaries feeding into ditch along the way from wet land area. Setting minnow trap.		Fine Organic		0-1	MT	58 CO 3 CT
1273	59.500232	-139.657230	Setting minnow trap here. Water is stagnant but appears to connect at multiple points to the wetlands adjacent to the road. Driving the road, the ditch appears to be connected to the additions on both sides all the way around the corner. CO were captured throughout the ditch so we will be nominating the stream around the whole corner based on the current connectivity after a normal amount of Fall rain.	15-20	Fine Organic		0-1		8 CO 6 SB
1274	59.495719	-139.655686	Ditch as shown by yellow line.	20-25	Fine Organic		0-1	MT	27 CO 7 SB



Figure 1.—Juvenile coho salmon and cutthroat trout captured at waypoint 1272.



Figure 2.—Channel at waypoint 1272.



Figure 3.—Channel at waypoint 1274.

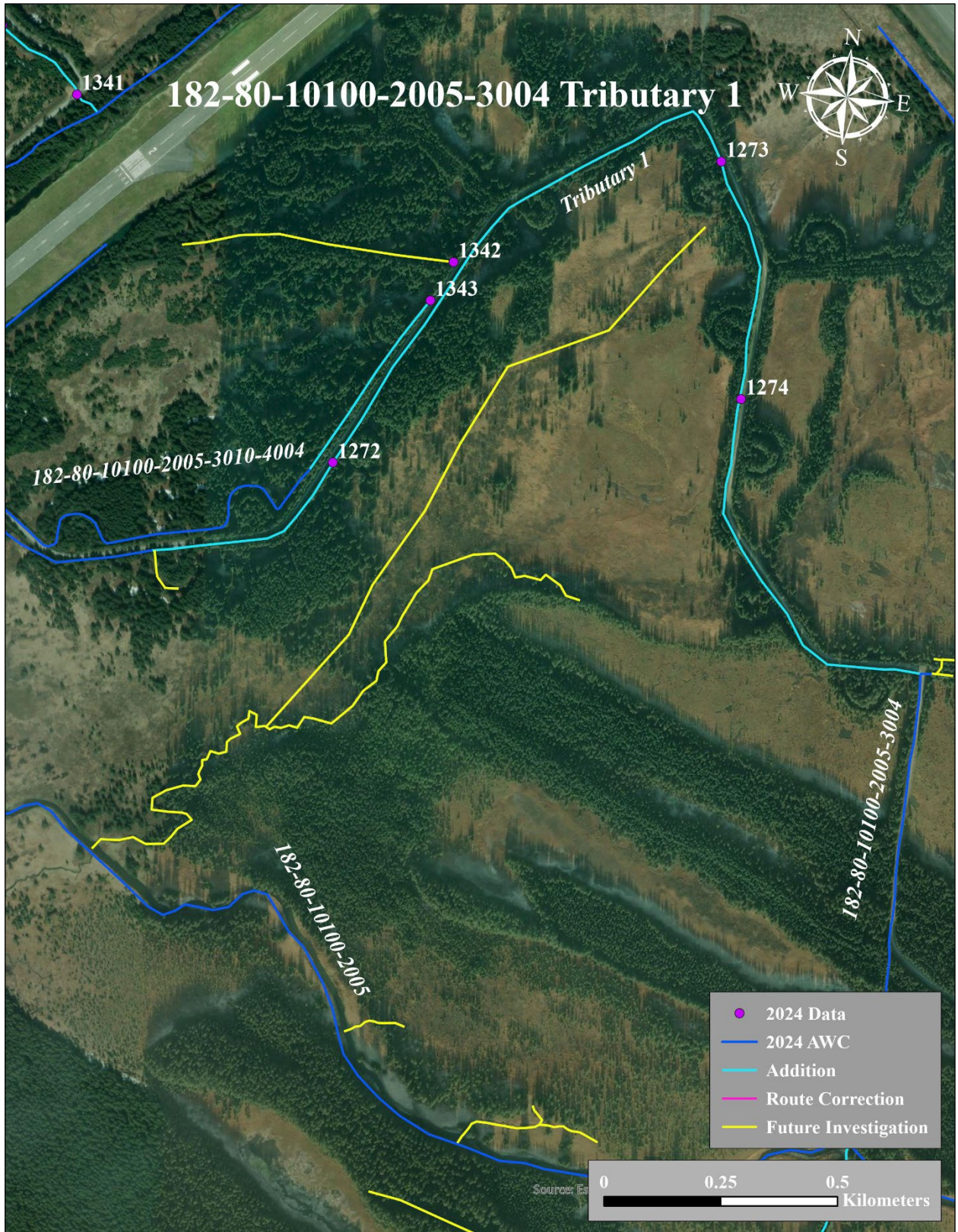


Figure 4.—182-80-10100-2005-3004 tributary 1 addition map.